

SACRED HEARTS & ST. STEPHEN R.C. CHURCH

WWW.SacredHearts-StStephen.com



SACRED HEARTS & ST. STEPHEN

St. Stephen's – Founded 1866
Sacred Hearts of Jesus & Mary
Founded 1882

MASSES ON SUNDAYS:

8:30 AM 10:00 AM & 12 NOON

5:00 PM on Saturday

MASSES ON WEEKDAYS:

Monday 8:30 AM

Tues. through Sat. 8:30 AM

Adoration: First Friday each month @ 7:15 AM

CONFESSIONS:

Saturdays 3:45– 4:30 P.M. as well as by appointment.

For Holiday and Special Mass Schedules, please call the Rectory and press extension number 4 for specific details.

Rectory: 108 Carroll Street

Brooklyn, N.Y 11231

718-596-7750 tel

718-260-9233 fax

REV. MSGR. GUY A. MASSIE

Pastor

REV. CLETUS FORSON

Parochial Vicar

REV. NGOZI

Prison Chaplain (In Residence)

MR. EDWIN RIVERA

Deacon

MRS. NANCY ARKIN

Director of Faith Formation

JOHN HEYER, II

Pastoral Associate

ROSE MARIE FOGLIA

Administrator/Business Manager

JAMES LAKE

Parish Organist

JENNIFER WU

Choir Director

EVELYN TROESTER DEGRAF

Choir Director Emerita

ANDREW DI MANSO

Sacristan

MICHAEL J. ENG

DONALD J. GLOCKNER, JR.

Parish Trustees and Advisors

BAPTISMS:

To prepare for the sacrament of Baptism, parents and godparents should plan to attend the 10:00 AM Mass on the second Sunday of the month followed by a Baptismal preparation meeting.

Parents must come to the Parish Office with a copy of the birth certificate one month before your planned Baptism.

SICK CALLS:

Please call and arrange for the sacrament of anointing whenever anyone is seriously ill.

MARRIAGES:

Please call the rectory at least 6 months ahead for an appointment with a Priest.

WELCOME:

Adults who are interested in learning more about or joining the Catholic Faith please call the rectory. Adults who have not completed the sacraments of initiation (Eucharist and/or Confirmation) please call the rectory.

ON LINE & CREDIT CARD GIVING: WWW.GIVECENTRAL.ORG/SHSS

RECTORY OFFICE HOURS

Monday thru Thursday 9:00 to 5:00 (Closed for Lunch from 1-2) Friday 9:00 to 2:00 Saturday 9:00 to 1:00

Office closed Sunday

No evening hours at the present time.

**IF YOU WISH TO SEE A PRIEST, PLEASE TELEPHONE FOR AN APPOINTMENT
PLEASE REMEMBER SACRED HEART & ST. STEPHEN'S CHURCH IN YOUR WILL.**

Mass Intentions For The Week

© J. S. Paluch Co., Inc.



- MON.** **SEPTEMBER 13, 2021**
8:30 Virginia Volpe
 BY: Paul & Connie Gessler

- TUE.** **SEPTEMBER 14, 2021**
8:30 Holy Cross

- WED** **SEPTEMBER 15, 2021**
8:30 For A Personal Intention

- THURS.** **SEPTEMBER 16, 2021**
8:30 Nicole Vergona
 BY: Loving Family

- FRI.** **SEPTEMBER 17, 2021**
8:30 Mary Rauso
 BY: Joe Cerato & Louis Pepe

- SAT.** **SEPTEMBER 18, 2021**
8:30 For The People of The Parish
5:00 PM Carl Gambello
 BY: Carole Gambello

- SUN** **SEPTEMBER 19, 2021**
8:30 Family Health & Unity
 BY: Marlene Olivieri
10:00 Janine Fuentez
 BY: Marilena Russo
Noon St. Candida*****
***TO USE RECTORY HALL AFTERWARDS

FINANCIAL INFORMATION



Sunday Collection 9/02	\$ 2,697.00
*Envelopes & cash	
On Line Donations	\$ 2,455.50
Total Sunday 9/02	\$ 5,152.50
Annual Weekly Expenses**	\$14,325.00
Difference:	\$ 9,172.50

**Total annual expenses divided by 52 weeks
**



The 2021 Annual Catholic Appeal supports the mission of our parish and the daily work of the Church in Brooklyn and Queens in ways no one parish can accomplish alone by supporting the following ministries:

- Catholic Youth Ministry Initiative
- Catholic Charities
- Hospital, College & Prison Chaplains
- Diocesan Vocations Office
- Catholic Migration Services
- Office of Faith Formation
- Bishop Mugavero Residence for infirmed clergy
- Futures in Education Scholarship Foundation

All donations made to the ACA above our Parish Goal are returned directly back to our parish for operations and improvements.



© J. S. Paluch Co., Inc.

We invite you to join us for morning prayer each day in our church at 8:00 AM. Begin your day praising God and thanking him for the blessings he has bestowed on you!

All are welcome.
We hope to see you there!

© J. S. Paluch Co., Inc.





Pray For

© J. S. Paluch Co., Inc.

Please remember in your prayers the members of our parish and community who are ill, hospitalized or in nursing home care, most especially:

- | | |
|----------------------|---------------------|
| Jonelle Bernardo, | Helena Rolla |
| Brad Hatry | Gertrude Zagarella |
| Michelle Laquercia | Irene Balen |
| Judith DeArmen | John Nigro |
| Judith Miller | RoseMary Lamaestra |
| Diane Barchuk | Addy Wardrope |
| Carol DeMairo | Anthony Gambardella |
| Anthony Tilocca | Anthony Turco |
| Roe Gambardella | Elizabeth Foley |
| Ann Curcuru | Dora Zanzonico |
| Lamar McNabb | Louis D'Angelo |
| Carol Montelbano | Gina Salta |
| Anthony Manfre | Celeste Internicola |
| Emma Huckerby | Kristin Quail |
| Louann Gambardella | Robert Janicke |
| Dominick Aiello, Jr. | Mark Carles |
| Erica Concino | Bernadette Janicke |
| Susan Hannan | Evan Marra |
| Hector Jimenez | Darren Munio |
| Abigail Memmesheimer | |
| Philip Saraceno | Vittorio Di Turi |



© J. S. Paluch Co., Inc.

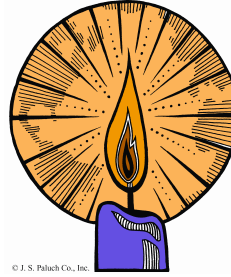
BOOK CLUB

Please join us on **M o n d a y , September 13th in the Parish House.**

We will be

discussing The Tide Between Us: An Epic Irish-Catholic Story of Slavery and Emancipation by Olive Collins. For those of you who plan ahead, our next meeting will be on October 4th. We will be discussing A Transgender's Faith by Walt Heyer.

All are welcome!



© J. S. Paluch Co., Inc.

If you wish to remember a loved one or have a devotion to a particular saint, annual memorial candles are available at the Rectory. These candles remain lit

for one year at a cost of \$100.00 per year (first time cost is \$110.00 to cover the expense of the plaque) They can be placed by any Saint in our Church and a personalized plaque with the inscription of your choice may be affixed to the candle. If you are interested or have any questions regarding these candles, please call the Rectory and speak to Rose Marie Foglia, Monday through Thursday from 9:00 AM to 4:00 PM. We will be happy to help you.



© J. S. Paluch Co., Inc.

We thank you for your generosity and support of our parish through your donations and contributions both by envelope, on line and

by mail. If you would like to join our on line donors, please visit www.GiveCentral.Org/SHSS. This is a user friendly site and will guide you to make a one time contribution or set up on going contributions either weekly, monthly or annually. If you wish to learn more about this process, please call the Rectory and we will be happy to assist you.

From the Pastor

© J. S. Paluch Co., Inc.

Dear Parish Community,

In the Gospel today Jesus poses a haunting question to his disciples. He asks them ‘Who do you say I am?’ Jesus wants them to identify him. They have heard him speak. They have witnessed miracles. They have observed his behavior. Now they are put on the spot, who is this Jesus? Peter speaking for all the disciples confesses: “You are the Christ.” Such an answer carries with it consequences and blessings. If Peter and the disciples have concluded that Jesus is the Christ, then they must follow him. They must be loyal to Jesus. They must put his agenda first. This conviction to follow Christ can cause them a great deal of suffering. If Jesus is killed, what can they expect for themselves.

The question who do you say Jesus is is also addressed to us every day and in every life situation. The answer carries with it consequences and blessings. If we confess the Lordship of Jesus, how does our behavior change? If we say Jesus is the Christ, what are we expected to do as a consequence of this faith? If we confess the Lordship of Christ, then being present for Sunday Mass is a privilege and a necessity. Because of this faith, questions should arise in our conscience as to how do we view the poor, the immigrant, the helpless, the unborn, the elderly, those with special needs? How do we see authority as role of service to all or as power to impose our will? How do we deal with differences whether that be racial, religious, political, social or economic? Does religious pride of self-righteousness have any place in one confessing the Lordship of Christ? How do we reverence the person of every human? How do we treat those whose faith is different? How do we treat the non-believer? If we confess the Lordship of Jesus, how do we allow the Lord to work through us for the building up of his kingdom?

What is the cost of discipleship? A great Lutheran Minister answered this question during the second World War (1939-1945) His answer was the cost of discipleship is death. This means death to one’s own agenda, one’s own life, one’s own love in favor of the mind and heart of Christ Jesus. This man was Dietrich Bonhoeffer. Countless many gave their life for discipleship with Christ Jesus. Sister Ida Ford and the Maryknoll Sisters and volunteers who were killed in El Salvador at their mission station. Then there is a man who I admire very much Bishop Oscar Romero who spoke out for truth and lives of the poor who was killed for his preaching the Gospel. St. Maximilian Kobe gave his life to save a fellow prisoner at Auschwitz. The Coptic Christian Martyrs of Egypt who were killed by terrorists on the beach of Libya who gave their lives for their faith. All they had to do was renounce Christ and they would have saved themselves. They did not renounce. This is a consequence of the confession of faith. Others gave their life in service to help the poor for the glory of Christ, countless sisters, brothers, priests who served in other countries and in the United States. Some of them may be familiar to you: Katherine Drexel who gave her life and fortune to service Native Americans. Mother Teresa, Mother Cabrini, Fr. Bernard Quinn former pastor of St. Peter Claver whose cause for canonization is now being investigated who gave his life for the Black American Community of the 1920s. Frederick Ozanam the founder of St. Vincent de Paul who served the poor. If we confess Jesus is Lord, what is the consequence and blessings for us?

Msgr. Guy A. Massie

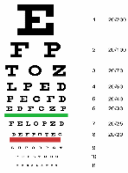
HAPPY AUGUST!

As we squeeze the last weeks of summer fun in the sun, we must be mindful to prepare for the cool and colorful Autumn and a healthy return to school, work and play!



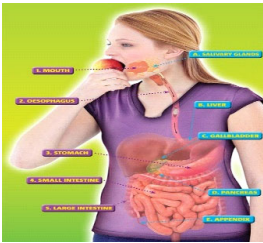
Summer days are getting shorter, but the Sun is bright and strong. Practice Sun safety, wear protective clothing, apply sunscreen and wear sunglasses!

Summer Sun Safety Month.



Now is a good time to get our eyes examined, especially children as they return to school. Sports players who wear prescription glasses should consider prescription goggles.

Children's Eye Health and Safety Month



Is your GUT telling you it's time for a check up?
Digestive Tract Paralysis Awareness Month and Gastroparesis Awareness Month



Let's learn about breastfeeding.

National Breastfeeding Month



Immunizations are for Children, Teens and Adults!
National Immunization Awareness Month

Dry patchy flaky skin/ Is it eczema or psoriasis?
See a dermatologist to be sure!
Psoriasis Action Month

World Breastfeeding Week, August 1st, National Health Center Week, August 9th, Contact Lens Health Week, August 19th, World Lung Cancer Day, August 1st, International Overdose Awareness Day, August 31st.

BE SAFE, STAY HEALTHY, SPREAD KINDNESS & LOVE

Sondra A. Rivera, RN, MSN-Ed., DW